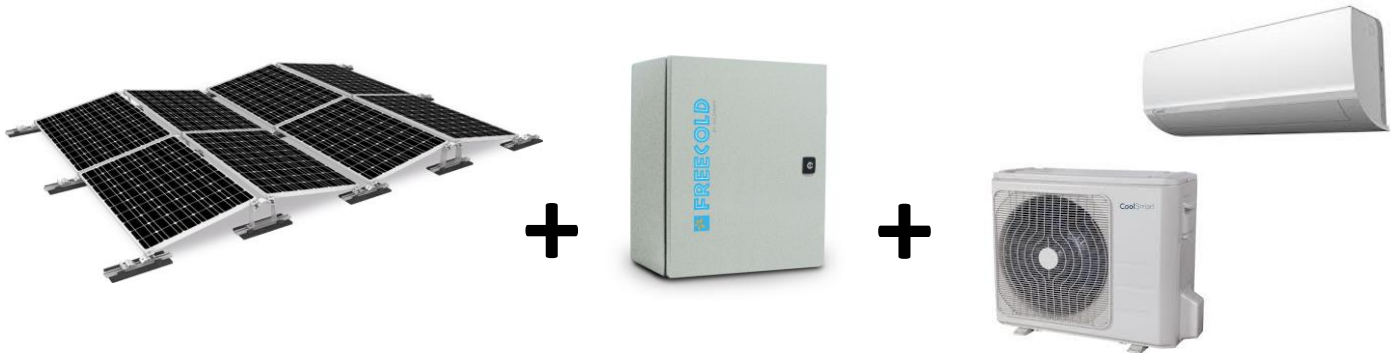


## Solar independent split air-conditioners

*Including photovoltaic power supply and smart management of energy*



### *The CS9 and CS12 split air-conditioners*

A strong design with a 5-year warranty on the compressor and 3 years on the other parts;

With a cooling capacity of 2.6 kW (9,000 BTU) and 3.5 kW (12,000 BTU), significant energy efficiency coefficients (SEER) of 6.8 and 6.7 to limit the required energy of batteries and the power of the solar plant to be installed; Their strengths: acoustic comfort [28 and 33 dB(A)] and energy saving [class A++];

An easy installation and time saving with the mounting plate and the installation bracket engineered to facilitate the connection of the fittings;

Easy maintenance with easy access to filters and to fan for faster and more efficient service;

Simple and easy to adjust:

- The "SWING DIRECT" function allows to control the movement of the detectors and the air flow;
- The "TIMER" function allows you to set the automatic start and shutdown of your air-conditioner, from the compact and intuitive infrared remote control. If the power is interrupted, it will automatically restart to the same operating conditions.

### *A smart management of energy*

Coupled to the photovoltaic modules, the FREECOLD boxed set guarantees the quality of the electrical supply and prioritizes the solar source before any other possible source, power grid or generator;

The solar batteries of the installation, with a capacity of 16 to 23 kWh, allow to smooth the irregularity of the solar source.

The installation is secured by DC disconnecter and lightning arrester devices, and a AC differential switch. The whole installation, including the photovoltaic field is grounded.

### *The solar plant*

10 to 14 European-origin photovoltaic modules are delivered with their supports and electrical wiring preinstalled for easy and quick commissioning.

The solar plant, between 3.2 and 4.5 kWp, powers the air-conditioner directly and simultaneously recharges the batteries to ensure the autonomy of the installation.

## CS9 split air-conditioner

*Including 3.2 kWp solar plant and 16 kWh battery storage*

- ✓ Cooling power 2.63 kW / Absorbed electric power 0.82 kW
- ✓ EER = 3.2 / SEER = 6.8 Energy class A++
- ✓ R410A refrigerant: 0.8 kg charge (pre-charge till 5m)
- ✓ Maximum operating temperature: 50°C
- ✓ Indoor unit: air flow 472 / 360 / 254 m<sup>3</sup>/h  
sound level 40 / 35 / 28 dB(A)
- ✓ Dimensions LWH : Indoor Unit: 717 x 193 x 302 mm Outdoor unit: 770 x 300 x 555 mm
- ✓ Weight: Indoor Unit: 7 kg Outdoor unit: 26,6 kg
- ✓ 3.2 kWp solar plant composed with 10 photovoltaic modules (320Wp from European origin, polycrystalline 72 6"-cells, 25 years performance guarantee)
- ✓ Supports of solar panels delivered complete in kit; Inclination at 10 °
- ✓ Electrical Safety Box DC/AC-Lightning arrester; DC switch + AC differential switch 30mA/16A
- ✓ storage by maintenance-free AGM battery pack (16 kWh-330Ah-48V); Pure lead technology; Service of 1800 cycles at 30% DoD
- ✓ Energy management and coupling of sources optimized according to the available power inputs (PV, batteries, external AC) and output requirements (pasteurizer, milk tank, battery charging)
- ✓ Battery charging possible by second source (grid or generator)

## CS12 split air-conditioner

*Including 4.5 kWp solar plant and 23 kWh battery storage*

- ✓ Cooling power 3.51 kW / Absorbed electric power 1.15 kW
- ✓ EER = 3.1 / SEER = 6.7 Energy class A++
- ✓ R410A refrigerant: 0.95 kg charge (pre-charge till 5m)
- ✓ Maximum operating temperature: 50°C
- ✓ Indoor unit: air flow 562 / 497 / 224 m<sup>3</sup>/h  
sound level 41 / 40 / 33 dB(A)
- ✓ Dimensions LWH : Indoor Unit: 805 x 193 x 302 mm Outdoor unit: 800 x 333 x 555 mm
- ✓ Weight: Indoor Unit: 7.7 kg Outdoor unit: 29,1 kg
- ✓ 4.5 kWp solar plant composed with 10 photovoltaic modules (320Wp from European origin, polycrystalline 72 6"-cells, 25 years performance guarantee)
- ✓ Supports of solar panels delivered complete in kit; Inclination at 10 °
- ✓ Electrical Safety Box DC/AC-Lightning arrester; DC switch + AC differential switch 30mA/16A
- ✓ storage by maintenance-free AGM battery pack (23 kWh-480Ah-48V); Pure lead technology; Service of 1800 cycles at 30% DoD
- ✓ Energy management and coupling of sources optimized according to the available power inputs (PV, batteries, external AC) and output requirements (pasteurizer, milk tank, battery charging)
- ✓ Battery charging possible by second source (grid or generator)